



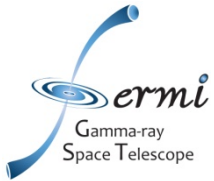
Fermi Users Group



FSSC News and GI Program Update

Chris Shrader,
Fermi Science support Center
NASA/GSFC

- Cycle-9 preparations
 - Fermi ROSES text revised, re-posted last month
- Science tools & P8 user support
 - P8 data and SW released in July
 - User community seems to have transitioned smoothly: no noticeable increase in volume or complexity of helpdesk queries
 - **What have been your experiences?**
 - Details in Dave's presentation to follow



FSSC Status, Major Activities



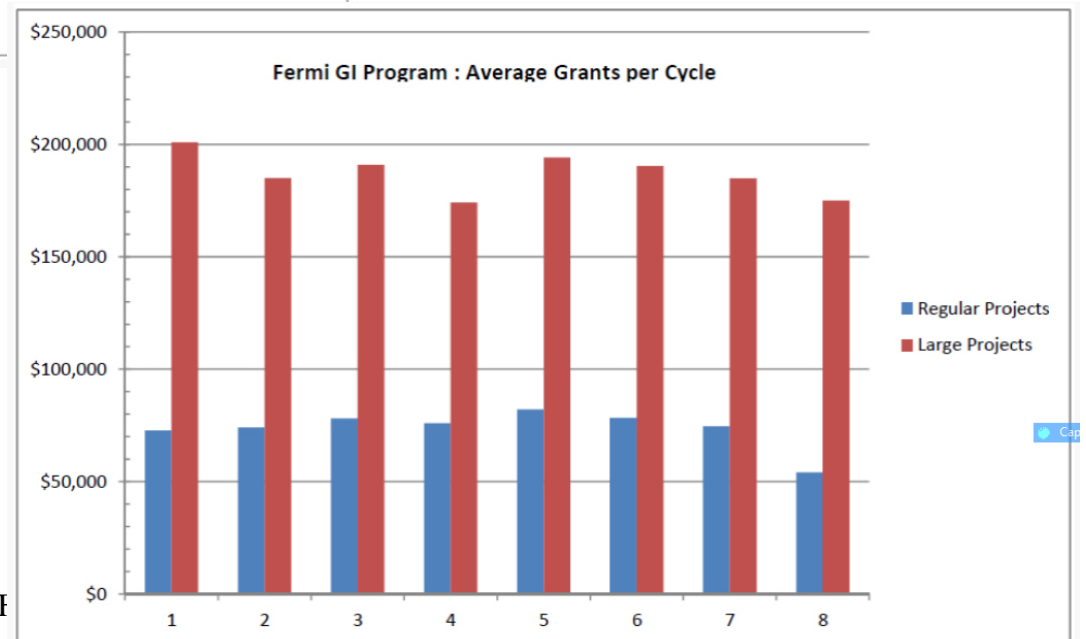
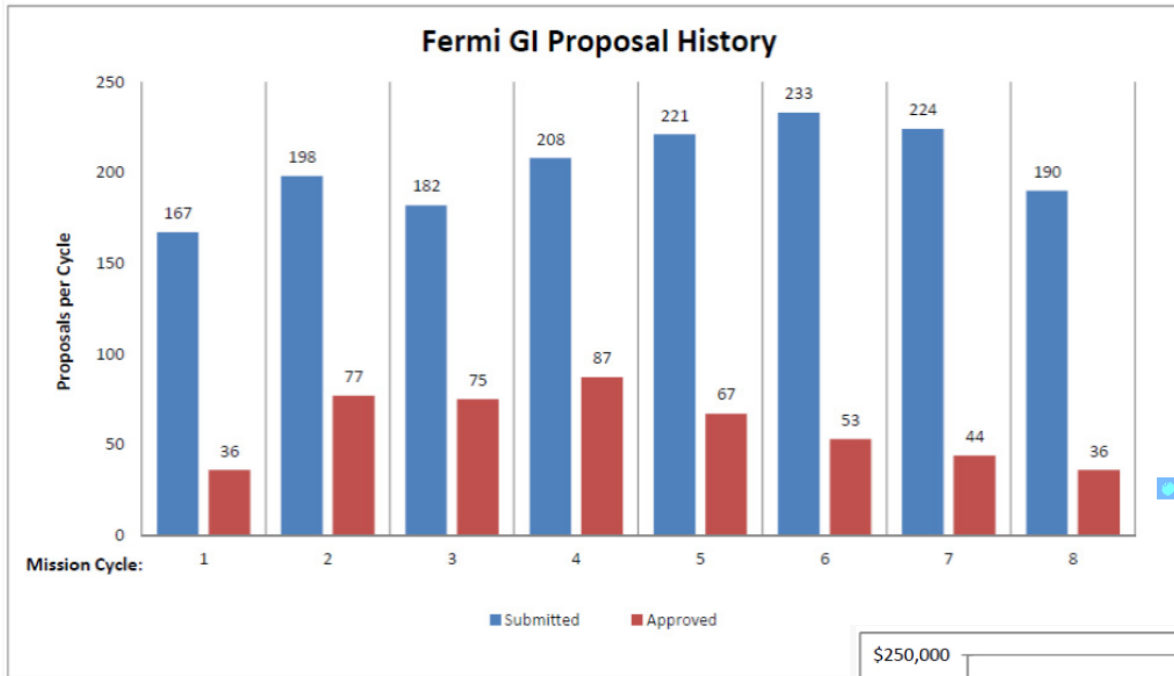
- Scheduling and planning support nominal
- Data operations, archive support activities nominal
- Staffing level unchanged
 - Colleen Wilson-Hodge replaced Valerie Connaughton as GBM team liaison

Cycle 8 Summary

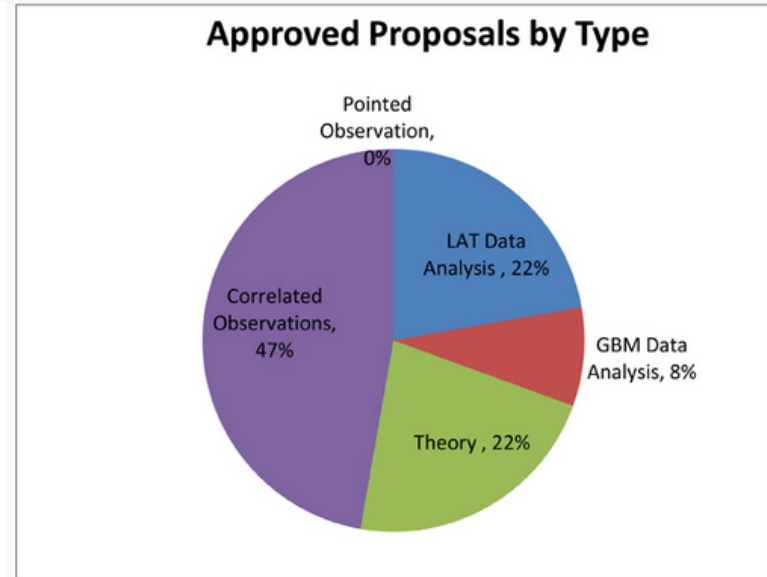
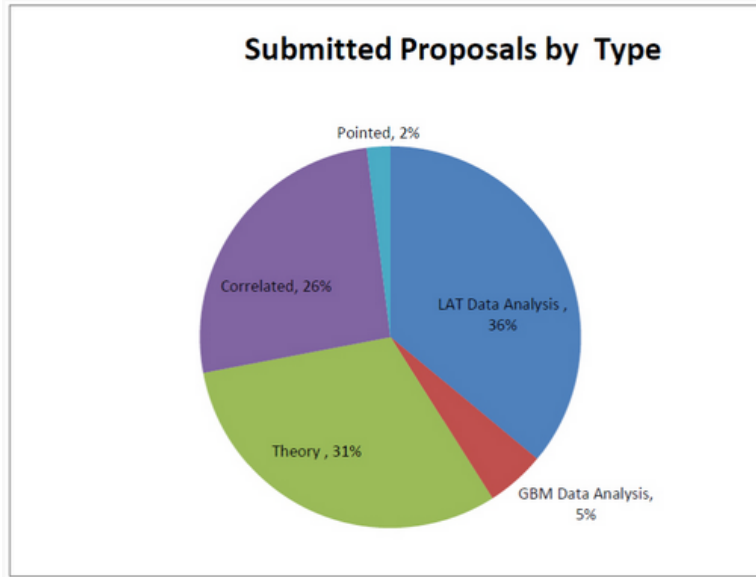


- 190 proposals received, 36 selected
 - ~15% submissions drop *wrt* Cy-5-7
 - 19% approval rate (excludes 4 LP continuations)
- Funding levels:
 - \$3.75M for \$2.2M new awards, \$1.55M Cy 6-7 obligations funded
 - Average grant \$55k (2 Large Projects @\$179k)
- All FY15 grants issued, program ongoing since August

GI Program History



Cycle 8 Program: A few Trends



Joint Program Summary				
Program	Requests		Awards	
	Proposals	Hours	Proposals	Hours
NRAO	10	200	3	60
NOAO	4	441	0	0
VERITA	10	241	2	54
INTEGRAL	1	28	0	0
Arecibo	3	122	0	0
High End Computing	3	-	0	-

The fraction of the program allocated to “Correlated Observations” has grown substantially at the expense of “Fermi Data Analysis”. Theory has stayed flat. **Should we be concerned?** Paradoxically, the joint programs have become increasingly undersubscribed.

Cycle 9



- **Schedule:**
 - Proposals due 1/22/2026
 - Peer review late March 2016
 - Selections, stage-II solicitations ~June 2016
 - Stage-II selections ~August 2016
- **Anticipated awards:**
 - \$3.0-3.3M, \$1.1M obligated
 - Thus, ~30 new grants (assuming ~2 new Large Projects)
- **No significant policy changes (Suzaku joint program discontinued)**



Extra Slides

